

Tosa-cho Innovation: A case of marginal town in Kochi

[限界集落]

Rajib Shaw

Professor, Keio University, Japan

Distinguished Professor, Indian Institute of Technology (IIT), Guwahati, India

Distinguished Professor, IDMR, Sichuan University, China

Visiting Professor, Indian Institute of Science, India

Visiting Professor, Indian Institute of Management, Kozikode, India

Guest Professor, Beijing Normal University, China

Adjunct Professor, Indian Institute of Technology (IIT), Hyderabad, India

Co-Chair, United Nations Asia Pacific Science Technology Advisory Group (AP-STAG)

Coordinating Lead Author (CLA), Asia Chapter, IPCC 6th Assessment Report

Co-Founder, Resilience Innovation Knowledge Academy (RIKA) <https://rikaindia.com>

Co-Founder, RIKA Institute <https://www.rikainstitute.org>

Chair of Board, SEEDS Asia <https://www.seedsasia.org>

Chair of Board, CWS Japan <https://www.cwsjapan.org>

Website: www.rajibshaw.org www.indiajapanlab.org AND www.rikaindia.com

Facebook: <https://www.facebook.com/rajibshawofficialpage/>

LinkedIn: <https://www.linkedin.com/in/rajib-shaw-6243791a5/>

Twitter: @rajibshaw

Academia

Science Policy interface

Start-up and innovation

NPO / NGO

Key Features of Tosa Town in Kochi Prefecture



Ageing population
Forest and Water Management



TOSA TOWN
SDGs FUTURE TOWN



Tosa town, Kochi prefecture

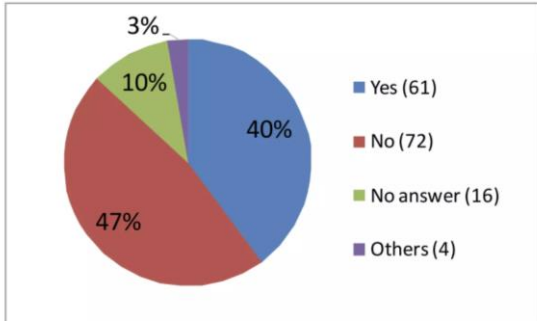
- Population: Approx. 3,600 (2030 est.: Approx. 3,100)
- Aging rate: about **47%**, Total fertility rate: 1.61
- Water Source of Shikoku Island, “Sameura Dam”
- The key industry are the primary industries :
 - ✓ **Rice cultivation**: Rice terraces, for food and sake
 - ✓ Biggest producer of “Tosa Akaushi”, **Wagyu beef** found only in Kochi Prefecture
 - ✓ **Forestry** (86% of forests, of which 82% are planted)
- "Medical care and welfare" accounted for 40% of value added by industry.
- Selected as **SDG Future City** in 2020



Citizen based approaches

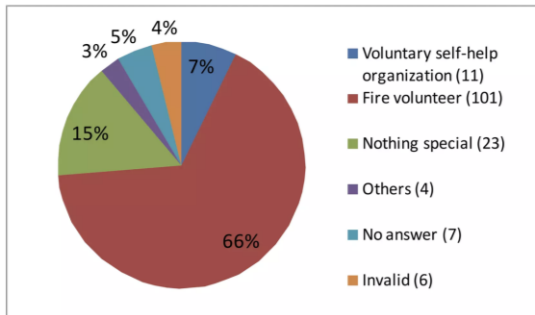
Citizen based decision making : Analytical Framework in Tosa town

Do you have voluntary self-help organization in your community?

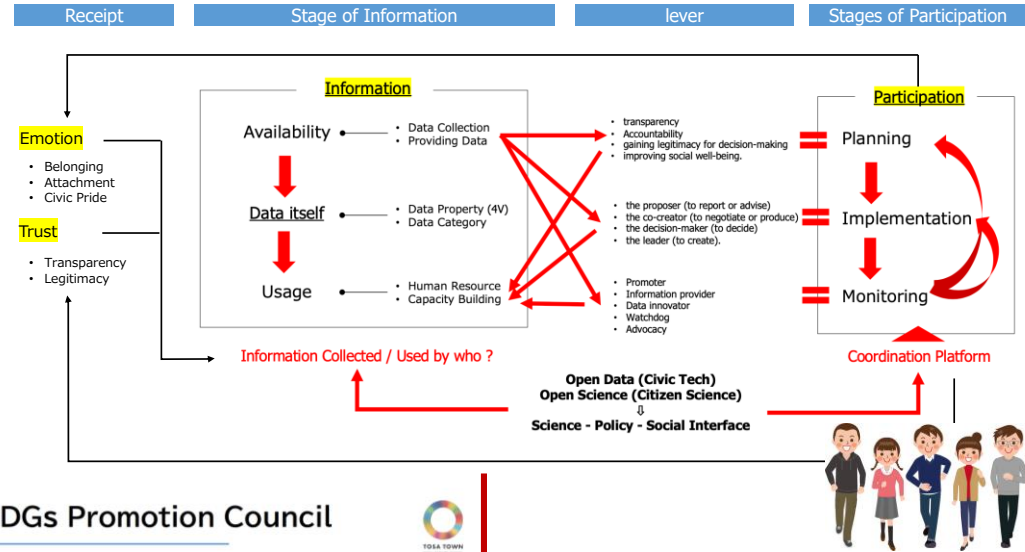


2010

Which organization do you rely on, in case of disaster?



2022 –
onward



Tosa Town SDGs Promotion Council



- A group of 25 'Next Generation Leaders' in each field of the town, consisting of individuals of various ages and genders
- We hold meetings four times a year where discuss and review the monitoring and revision of the Tosa Town SDGs plan.
- Childcare support is provided during meetings, and the meetings are also broadcasted via Zoom and YouTube.
- Recently, we have established subcommittees ("protect" "create" "connect") to incorporate citizen opinions into next year's budget considerations.



As the youth population increases ...

- Strengthening disaster prevention
- Development of local industry
- Tradition and culture inheritance
- Stability of social security system

Context Analysis: Yoshino River Basin

- Larger part of **Takamatsu City's** water supply on Yoshino River basin
- Upstream- downstream relation and forest management in upstream is quite critical

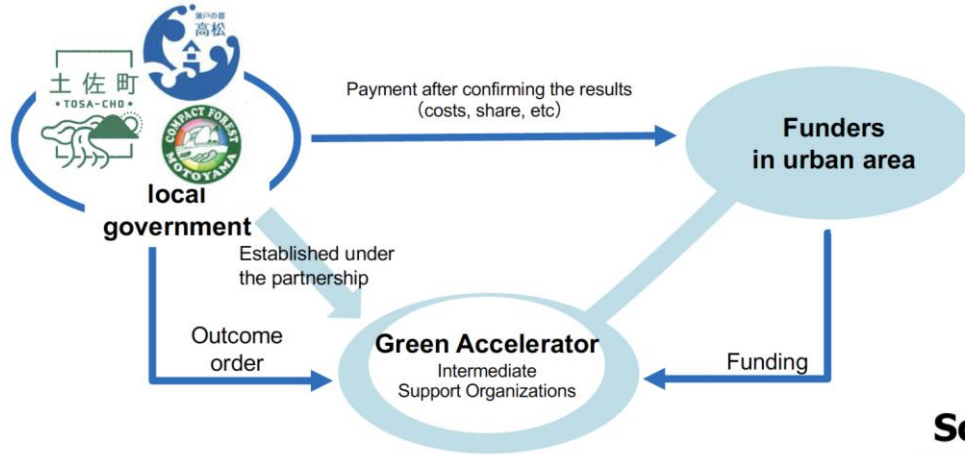


Reihoku area, Kochi Prefecture

- Forest rate: 87.9%
 - Old population: 38.7%
 - Total population: 15,000
- Three towns & one village



Green accelerator



Forestry



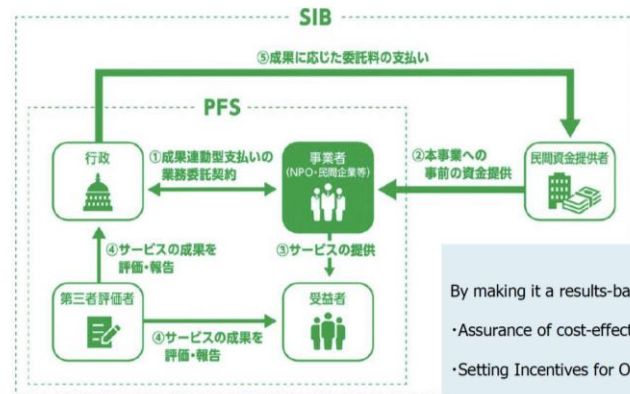
Decarbonization
Stabilization of water sources



Forestry-related
industries

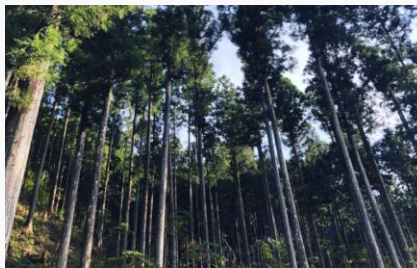


Social Impact Bond



By making it a results-based system,
 ・Assurance of cost-effectiveness
 ・Setting Incentives for Outcomes

GREEN ACCELERATOR



森を「水」と考える。



一般財団法人もりとみず基金
概要説明資料

Achievements:

- Established the “Moritomizu (Forest and water) Foundation,” a general incorporated foundation, through joint funding by Tosa Town, Motoyama Town, and Takamatsu City, which acts as the intermediate support organization (Green Accelerator).
- The foundation’s officers include administrative bodies from both regions, forestry operators, environmental NGOs, private enterprises (energy sector), research institutions (universities), and financial institutions.

INTEGRATION WITH SDGs



Realization of sustainable water source conservation and recharge through watershed collaboration (municipal collaboration, public-private partnership)

Realization of sustainable water source conservation and recharge will lead to sustainable lifestyles in both the water-utilizing and water-source areas.



Achieve regional decarbonization through cooperation between water-using and water-source areas

As droughts and localized heavy rainfall are expected to increase with climate change, regional decarbonization efforts are needed to ensure water security. The carbon sequestration of cedar forests will be restored as forests are renewed. In addition, Nature-based Solutions (NbS) are expected to be promoted as a way for wood-related industries.



(1) Securing forestry leaders in a way that contributes to the conservation and recharge of water resources.
(2) Creation of related industries that add value to timber and securing of bearers

In order for water sources to be conserved and recharged, it is necessary for "mountains to move". In order for the mountains to move, it is necessary for the younger generation to be able to work there.



(1) Ensuring a stable water supply for "creating a town where people can continue to live" in the water utilization area
(2) Promotion of tertiary and other industries in the water source area to encourage the young generation to settle in the area



To ensure the sustainability of life and industry in the water-utilizing areas, it is necessary to secure a stable water supply. On the other hand, in order to secure the bearers of forestry-related industries, it is necessary to make the town a place where a diverse range of people can live.

Thank you very much

Website:

www.rajibshaw.org

www.indiajapanlab.org

www.rikaindia.com

Facebook:

<https://www.facebook.com/rajibshawofficialpage/>

LinkedIn:

<https://www.linkedin.com/in/rajib-shaw-6243791a5/>

Twitter:

@rajibshaw